

Kindly sponsored by

KEBUR

GARDEN MATERIALS

Phyllis Tuckwell®

Hospice Care

...because every day is precious



2026 open GARDENS

in aid of Phyllis Tuckwell

Visit our
gardens



Registered with
**FUNDRAISING
REGULATOR**

Phyllis Tuckwell, Waverley Lane, Farnham, Surrey GU9 8BL

Phyllis Tuckwell Memorial Hospice Ltd. Registered Number 1063033. Registered Charity Number 264501.

Rayners of Godalming

ESTABLISHED 1888

www.raynersbuildings.co.uk

**SPECIALISTS IN THE SUPPLY AND ERECTION OF
HIGH QUALITY BESPOKE GARDEN BUILDINGS.**



**CONSERVATORIES . SUMMERHOUSES . GREENHOUSES . STUDIOS
TIMBER GARAGES . GARDEN SHEDS . GARDEN FRAMES
WORKSHOPS . HOME OFFICES . DOG KENNELS . POULTRY HOUSES
ASK OUR REPRESENTATIVE TO CALL FOR A NO OBLIGATION
QUOTATION OR VISIT OUR SHOWGROUND TO INSPECT OUR
RANGE OF HIGH QUALITY GARDEN BUILDINGS.**

LLANAWAY WORKS, MEADOW (A3100), GODALMING, SURREY. GU7 3HR

Telephone (01483) 416242.

Welcome

KEBUR
GARDEN MATERIALS

Open Gardens is back for 2026! Garden owners across West Surrey & North East Hampshire are once again inviting you to take a look around their gardens this spring and summer, to support Phyllis Tuckwell.

There are gardens of all sizes and designs, from those with several acres to some smaller cottage gardens, and fantastic group openings, all promising you a great day out! We are very grateful to the garden owners who are supporting us this year, and at many of the gardens you'll find plants and refreshments for sale, with proceeds going to Phyllis Tuckwell.

This brochure provides details of all the gardens featured in this year's Open Gardens. We hope you enjoy exploring them!

We are delighted that Kebur Garden Materials is sponsoring Open Gardens again this year. As a local, family-run business, Kebur Garden Materials offers all the convenience of a one-stop shop, with fencing, decking, driveway blocks, topsoil and aggregates to complete any project.

As the NHS/Government only covers around 25% of our costs, we have to raise over £30,000 a day to provide our care, which is given free of charge to our patients, their families and carers. All of the money raised from Open Gardens will go directly towards funding the care we provide for local patients and their families, who are living with an advanced or terminal illness, such as cancer.

As demand for our Hospice Care services grows, one in three people locally will need support from Phyllis Tuckwell. This spring, we are looking forward to opening our new Hospice, now with 18 inpatient bedrooms and fantastic Living Well and outpatient spaces to help us future-proof our care for patients, families and their carers. You can find out more at www.pth.org.uk/new-hospice

Calling all
Keen
gardeners!

If you're potty about your garden, it would be blooming marvellous for you to join next year's Open Gardens campaign.

Give our Fundraising team a call on 01252 729446 or drop us an email at fundraising@pth.org.uk

We'd love to hear from you!

Opening Dates

May

Saturday 30th and Sunday 31st
Churt Open Gardens



June

Saturday 6th
Shamley Green Open Gardens

Sunday 7th
Highmount, Guildford

Saturday 27th
Fleet Neighbours

Saturday 27th and Sunday 28th
Busbridge Open Gardens



July

Sunday 5th
Badshot Lea Open Gardens

Saturday 18th
Deron, Yateley

Sunday 26th
13 Dagley Farm Park Homes, Shalford



August

Sunday 2nd
5 Burwood Close, Guildford

Saturday 15th and Sunday 16th
Greenhills Farm, Tilford

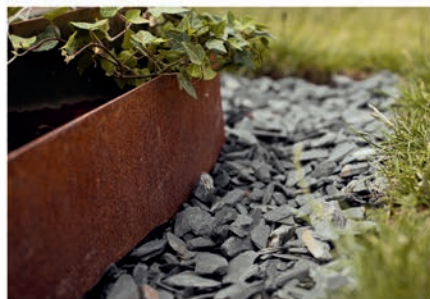




Create a garden you'll love for years to come

Whether you're simply refreshing a few borders or planning a full garden transformation, Kebur's one stop shop will help you bring your ideas to life.

From beautiful natural stone and porcelain paving to decking, fencing, compost and aggregates, everything Kebur stocks is carefully selected for quality, style and value. With online ordering, easy collection and free local delivery, you can plan and purchase whenever



inspiration strikes. Kebur's friendly and knowledgeable team support everyone from passionate home gardeners to experienced landscapers, offering practical advice and reliable delivery to make your garden project go smoothly.

We're proud to be supporting this year's Open Gardens in aid of Phyllis Tuckwell. As a local, family-run business, community is at the heart of what we do - and we're delighted to play a part in an event that celebrates gardens and brings people together.



www.kebur.co.uk
01252 517571

**Visit or call us six days a week
and start planning your next
garden project**

Forget Me Not

Things to remember as a visitor

Money

Remember to bring cash with you to pay for your entry to the gardens and to purchase plants and refreshments, if available.



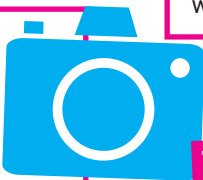
Mind your step!

Steps, uneven paths and plants across the walkway are aspects of most gardens, so please take care when walking around the gardens and keep to the main paths where possible.



Photography

If you see something you like and want to take a quick photo, don't forget to ask the garden owner for permission beforehand.



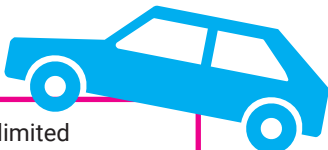
Time for a cuppa

Many gardens will be offering tea, coffee and, if you're lucky, cake, so make sure to take some spare change with you. Proceeds from refreshments will go to Phyllis Tuckwell.



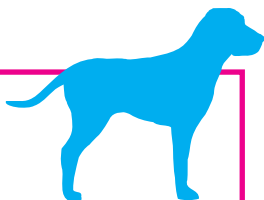
Parking

Parking may be limited at some gardens, especially if it's busy, so please plan ahead and car share if you are visiting with friends and family.



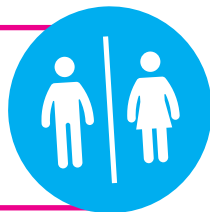
Dogs

If you've got a four-legged friend you want to bring with you, check for the dog symbol under each garden description to check if dogs are allowed. Don't forget, dogs need to be kept on a lead at all times and no mess left behind!



Toilets

Toilets will not be available at most gardens, so please bear this in mind before you visit.

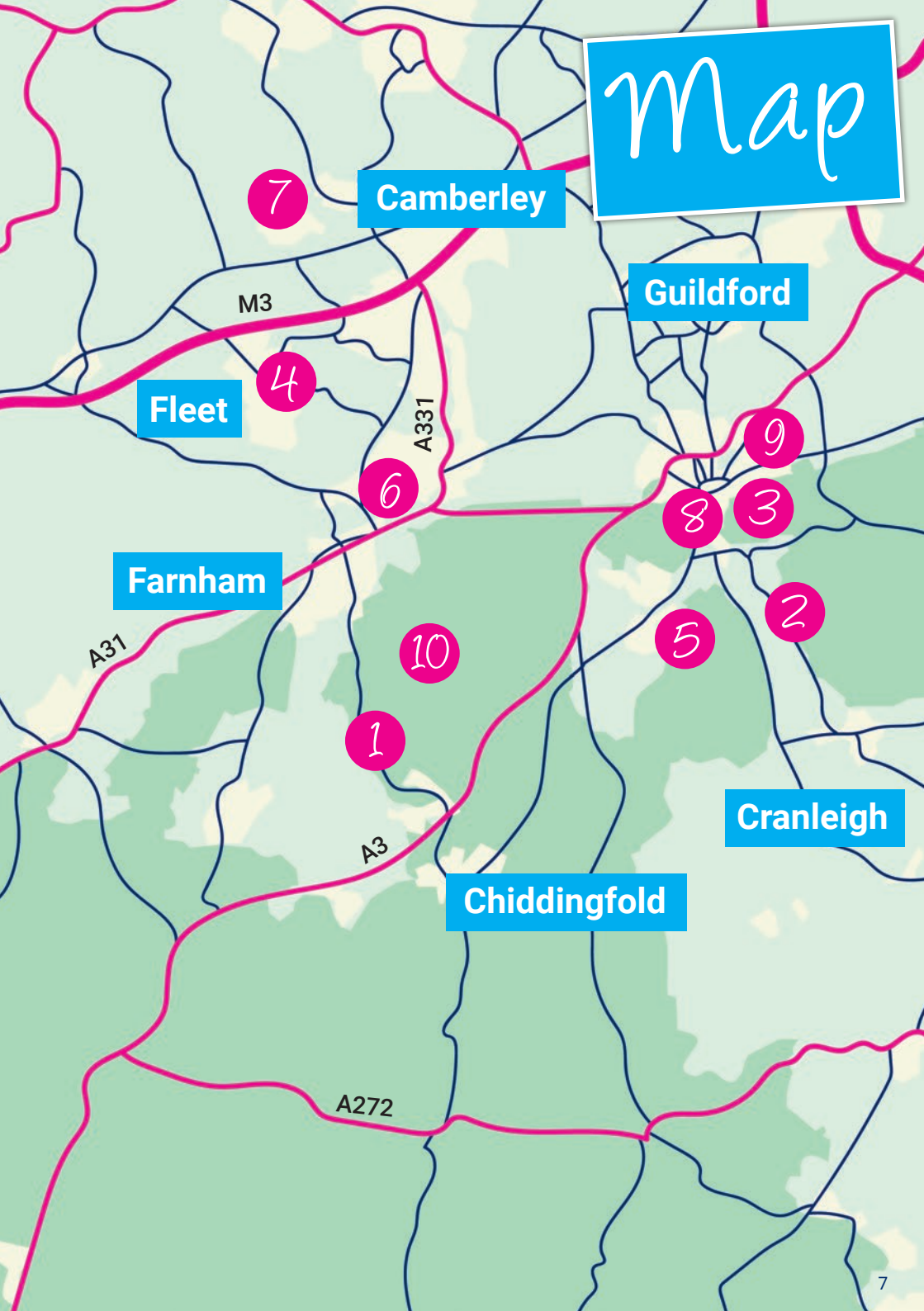


Leave only footprints

Remember to take any rubbish with you and leave the garden as you found it on arrival.



Map



7

Camberley

Map

M3

Guildford

Fleet

4

A331

6

9

8

3

Farnham

2

A31

10

5

1

Cranleigh

A3

Chiddingfold

A272



CLIFTON INGRAM
solicitors

(Incorporating Bells Solicitors)



SPECIALIST LEGAL ADVICE FROM LOCAL PEOPLE.

**We're here for you
when you need us.**

Clifton Ingram is a full-service law firm with specialist lawyers in:

- Wills
- Probate & Trusts
- Conveyancing
- Family & Divorce
- Company & Commercial
- Employment
- Dispute Resolution
- Commercial Property

Call our Farnham office today 01252 733733 | cliftoningram.co.uk

SQUIRES

GARDEN CENTRES

A family business since 1936

Quality plants, gardening products, BBQs, garden furniture and gifts. Our Café Bar serves breakfast, lunch and afternoon tea.

squiresgardencentres.co.uk

Celebrating 90 years



85% of our plants are sourced from UK nurseries and many of them are grown by Squire's

The Gardens

Details of gardens subject to change at any time.

1 **Saturday 30th and Sunday 31st May**

1.30pm - 5.30pm

Last admission at 5pm

Churt Open Gardens

Foxhanger, Bacon Lane, Churt, Surrey, GU10 2QE

Symondstone, Wishanger Lane, Churt, Surrey, GU10 2QL

Birchwood, Pond Lane, Churt, Surrey, GU10 2QA

Furze Hills, Simmondstone Lane, Churt, Surrey, GU10 2HT

Furze Hill Wood, Star Hill, Churt, Surrey, GU10 2HS

Tyndrum, Pond Lane, Churt, Surrey, GU10 2QA

Coppice Cottage, Pond Lane, Churt, Surrey, GU10 2QA

Six beautiful gardens and a woodland opening in Churt.

With short walks in between you can explore these lovely gardens which include mixed borders, specimen trees, orchards and vegetable gardens displaying a variety of seasonal plants and planting styles.

Keep an eye out for the large wild pond and stream at Foxhanger, and enjoy an ice cream as you wander through the 22 acres of woodland at Furze Hill Wood. This year Symondstone will host Earth and Stem; an exhibition of ceramics and art shaped by botanical forms, nature, and cultivated landscapes.

Tickets are valid for both Saturday and Sunday, so if you can't visit all the gardens in one afternoon, why not make a weekend of it?

**Admission: £8 pre-booked online,
£10 on the day (children U16 free).**

All tickets valid for both days.

**Visit [www.pth.org.uk/events/
open-garden-churt/](http://www.pth.org.uk/events/open-garden-churt/) or
scan QR code for tickets.**



Coming into Churt on the A287, turn into Pond Lane and then turn left at the junction with Bacon Lane, with the Frensham Pond Hotel on your left. Due to the narrow lanes in Churt, parking is available at Foxhanger and Symondstone.

Shamley Green Open Gardens

Dene House, The Green, Shamley Green, GU5 0UA
 Easteds, The Green, Shamley Green, GU5 0UH
 Barn Cottage, The Green, Shamley Green, GU5 0UA
 Shamley Wood Estate, Woodhill Lane, Shamley Green, GU5 0SP
 Surrey House, The Green, Shamley Green, GU5 0UA
 Lark Rise, Stonards Brow, Shamley Green, GU5 0UY
 Cranley Cottage, Stonards Brow, Shamley Green, GU5 0UY
 Holly Cottage, Lords Hill Common, Shamley Green, GU5 0UZ
 Old Cottage, Lords Hill Common, Shamley Green, GU5 0UZ

Shamley Green's Open Gardens event offers a wonderful, "unfiltered" mix of spaces to share, ranging from award-winning three-acre estates with tropical pergolas and stunning views to hidden village-centre gems that show just how much you can do with a smaller plot.

You'll find well-loved cottage gardens that have been in the same family for over thirty years, alongside rule-breaking spaces where the moss is greener than the grass and the owners are crossing their fingers for a kind spring.

Whether you want to see chickens with their own hanging baskets, navigate a garden designed for puppy "zoomies," or simply find a quiet corner near a wildflower area to sit and relax, there is something here for everyone. From level, accessible orchards to sandy-soiled vegetable

patches and "perfectly-under-control" brambles, these gardens are as much about personality and passion as they are about plants.

Tea and cake will be available all afternoon at the Arbutnot Hall on the Green.

Admission: £8 pre-booked online, £10 on the day.

Visit www.pth.org.uk/events/shamley-green-open-gardens or scan QR code for tickets.



Follow the road into Shamley Green; the village green will be on your right if you are coming from Guildford and your left if you are coming from Cranleigh.

Key



Well-behaved dogs welcome on a lead



Plants for sale



Raffle



Refreshments available



Partly wheelchair accessible



Toilets

3 Sunday 7th June 2.30pm - 5pm

Highmount, 12 Fort Road, Guildford, GU1 3TD

This is a section of an original Gertrude Jekyll Garden, with some of the original hard landscaping and planting. Set on a steep hill, it has far reaching views.

Admission: £5 (children U16 free)



The house is on Fort Road, where there should be easy parking.



4 Saturday 27th June 10.30am - 2.30pm

Fleet Neighbours

75 Kenilworth Road, Fleet, GU51 3AY

3 Guildford Road, Fleet, GU51 3EH

6 Kent Road, Fleet, GU51 3AH

The Fleet Neighbours' Open Garden event offers a wonderful mix of styles, from perfectly polished borders to creative projects in the making. You can wander through perennial beds and modern walkthrough arches, pausing by two peaceful patios or the quiet ripple of a wildlife pond and water feature. There's plenty for the plant enthusiasts too, including a greenhouse with an impressive cactus collection, a naturalistic front garden filled with ornamental grasses, and year-round greenery spread across two levels.

If you're a fan of "growing your own," you'll find everything from established fruit and veg patches to a charming cut flower bed and a newly evolving garden that shows how to handle shade-friendly planting. Whether you're here for the design ideas or just a lovely stroll, there is something in these three gardens to inspire everyone.

Homemade cakes, teas and coffees for sale.

All proceeds from ticket sales go to Phyllis Tuckwell, Parkinson's UK and Stepping Stones DS.

Admission: £7 (children U16 free) for all three gardens.

Visit www.pth.org.uk/events/fleet-open-garden or scan QR code for tickets.



Accessed easily from Kings Road or Avondale Road.



5 Saturday 27th and Sunday 28th June

2pm - 5pm

Busbridge Open Gardens **SAVE THE DATE!**

At least 16 beautiful gardens, both large and small will be open across the village. A map with full garden details will be available late spring. Keep up to date via the Busbridge Open Gardens Facebook page: www.facebook.com/busbridge.co.uk

Proceeds split 50% to Phyllis Tuckwell, 50% to Skillway.

Admission: £5

Visit www.pth.org.uk/events/busbridge-open-gardens for more information.



6 Sunday 5th July

11am - 4pm

Badshot Lea Community Garden

Rear of Hop Kiln, St George's Road, Badshot Lea, Farnham, GU9 9LY

The Badshot Lea Community Garden was once an unloved patch of land; this site has been transformed by volunteers into a flourishing community garden. Now a vibrant hub for biodiversity, the garden features allotment spaces to rent, a thriving wildlife pond and heritage hops.

50% of proceeds to go to Phyllis Tuckwell, and 50% to Badshot Lea Community Garden.

Admission: £4 (children U16 free)

Visit www.pth.org.uk/events/badshot-lea-open-garden or scan QR code for tickets.



Turn off St George's Road into Kiln car park. Go straight ahead to rear of building. Garden is on your left.



7 Saturday 18th July

11am - 4.30pm

Deron, Old Welmore, Yateley, Surrey, GU46 6XB

A garden with hidden nooks and a beautiful acer overlooking the wildlife pond. Greenhouses, a stream, and a mix of roses and perennials bring colour throughout. There are plenty of benches where you can sit, relax and take it all in.

Admission: £3 (children U16 free)



From the main A3272 running through Yateley to Eversley, turn left into Manor Park Drive, opposite the Tesco garage. Follow the road, keeping left, and you'll find Old Welmore on the left, opposite an alleyway. Deron is the second bungalow on the left. It's best to park along the tarmac road rather than on Old Welmore, as parking there is very limited.



Key



Well-behaved dogs welcome on a lead



Plants for sale



Raffle



Refreshments available



Partly wheelchair accessible



Toilets

8

Sunday 26th July**12pm - 5.30pm****13 Dagley Farm Park Homes, Shalford, Guildford, Surrey, GU4 8DE**

Many pots full of plants, large pond and waterfall, with a backdrop of National Trust marshland and trees. Has won first prize in Guildford in Bloom for three years.

Admission: By donation

Near Shalford train station down the lane with the Scouts hut, parking on the right. Go to the bottom of the lane into the estate.



9

Sunday 2nd August**1.30pm - 4.30pm****5 Burwood Close, Guildford, GU1 2SB**

Gold Winner of Guildford in Bloom's 'Best Front Garden' since 2019 and winner of 'Overall best in show' in 2021 and 2025, this stunning garden is not one to be missed.

Admission: £3 (children free)

Turning left into Bushy Hill Road from the A25, take the first left into Kingswood Close, then the first left into Burwood Close.



10

Saturday 15th and Sunday 16th August**2pm - 5pm****Greenhills Farm, Tilford, GU10 2DG**

Explore three acres of gardens, with open lawns, pretty borders and a traditional knot garden. There's a lovely barn area with hanging baskets and meadows to wander through at your own pace. You'll also find quiet seating areas where you can enjoy a relaxing drink and a slice of homemade cake.

Admission: £5 pre-booked online, £6 on the day.

Visit www.pth.org.uk/events/tilford-open-garden or scan QR code for tickets.



From Grange Road, pass two fields on the right, then Greenhills Farm is the first house on the right, opposite a row of cottages.

**Key**

Well-behaved dogs welcome on a lead



Plants for sale



Raffle



Refreshments available



Partly wheelchair accessible



Toilets

Phyllis Tuckwell®

Hospice Care

...because every day is precious



Host your own

Bake & Brew

for Phyllis Tuckwell

**This May, host your own event
to raise funds for local Hospice Care.**

Whether it's with your friends, family, neighbours, colleagues,
or your whole community, we're inviting you to bring people
together for a brew, some cake, and a good time.

It's a brew-tiful way to make a difference!

For more information
or to sign up, scan
the QR code or visit
[www.pth.org.uk/
bake-and-brew](http://www.pth.org.uk/bake-and-brew)



Big Band Jazz at The Hogs Back Brewery



Starring
'The Barnes Big Band'



Sunday 14th June, 2026, 1pm-5.30pm

The Hangar, The Hogs Back Brewery, Tongham, Surrey, GU10 1DE

Join us for an afternoon of live music from 'The Barnes Big Band', a 16-piece jazz orchestra. Enjoy locally brewed Hogs Back beer and help us celebrate your new Hospice, which will open in 2026

Open - 1pm ~ Jazz concert - 2pm-4.30pm with a short interval ~ Food available to purchase
Event closes at 5.30pm ~ 100% proceeds to Phyllis Tuckwell

TICKETS £25, including a welcome drink*

*To purchase tickets or for more information:

 pth.org.uk/jazz-at-the-hbb  01252 729446  support@pth.org.uk

Phyllis
Tuckwell's

Phyllis Tuckwell®
Hospice Care



MOTOR SHOW

Join us to exhibit your unique and spectacular vehicle, or come along and view the stunning displays of motoring - all whilst supporting Phyllis Tuckwell, Hospice Care

Scan the QR code or visit
www.pth.org.uk/motor-show
for more information.

Kindly sponsored by **Kelly's**
STORAGE

Sunday 2nd August, from 9am
Churt, Surrey

*A very special celebration of motor vehicles,
with access to an incredible private collection.*



To exhibit your vehicle or for more information:



pth.org.uk/event/motor-show



01252 729446



ptmotorshow@pth.org.uk

Registered with



FUNDRAISING
REGULATOR

Find us on:



Phyllis Tuckwell, Waverley Lane, Farnham, Surrey GU9 8BL

Phyllis Tuckwell Memorial Hospice Ltd. Registered Number 1063033. Registered Charity Number 264501.

Make a Will that makes a difference



Phyllis[®]
Tuckwell
Hospice Care
...because every
day is precious

You can have your Will written by a local solicitor, in exchange for a donation to Phyllis Tuckwell. For more information, visit www.pth.org.uk/makeawill



WE SHOP LOCAL

SUPPORT LOCAL



CGJ MATHIAS & SON
NURSERIES

SINCE 1963



HedgesOnline is the online presence of CGJ Mathias & Son Nurseries - a third generation family-run nursery growing and supplying quality hedging plants since 1963. Our experts can advise you on what plants would be best suited to your requirements.

Call 01252 714552

www.hedgesonline.com

Follow us on      

Planting service available 

Make your _____
dream garden
_____ a reality



Photo courtesy of DW Construction and Landscapes



Free local
delivery

KEBUR

GARDEN MATERIALS

Paving • Fencing • Sleepers • Decorative stone
Lighting • Decking • Walling • Edging • Compost

kebur.co.uk 01252 517571

★ Trustpilot ★★★★★